

## Substance identity profile for ANILINE

Mono-constituent substance

### IDENTIFICATION OF THE SUBSTANCE

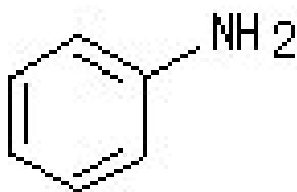
CAS No: 62-53-3

EINECS No: 200-539-3

IUPAC name: aminobenzene

Molecular formula: C<sub>6</sub>H<sub>7</sub>N

Structural formula:



Molecular weight: 93,13 g/mol

Synonym: phenylamine

### PURITY / IMPURITIES, ADDITIVES

**Purity:** ≥ 99.0% w/w

**Impurities:** ≤ 1.0% w/w - NOT relevant for classification & labeling

Potential impurities (for info only):

- Alkanes < 0.4 %
- Water < 0.2%
- Nitrobenzene < 0.1%
- Phenol < 0.1%
- Cyclohexanol < 0.1%
- Cyclohexylamine < 0.1%
- Toluidines (sum) < 0.1%
- Cyclohexanone < 0.1%
- N-methyl aniline < 0.1 %
- Benzene < 0.1%

**Additives: none**

### Change log

Date	Action	Person
2009-08-03	MW corrected to 93,13	EW
2010-03-08	modified for use in SIEF	EW