

SUBSTANCE SAMENESS INFORMATION SHEET

Version: 19 October 2009

REACH name : diaminotoluene

Common name : m-TDA mixture

REACH substance type : Mono Const. Subst.

EC No. (EINECS / NLP) : 246-910-3

CAS No. : 25376-45-8

CAS Name :

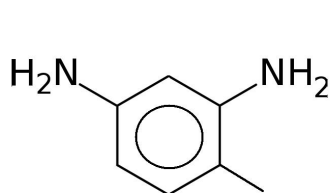
IUPAC Name : 2-methylbenzene-1,3-diamine
4-methylbenzene-1,3-diamine
N.A. (commercial TDA mixture (2,4/2,6-TDA (80/20)))

Other (chemical) names : methyl-phenylenediamine
phenylenediamine, ar-methyl-
benzenediamine, ar-methyl-
toluenediamine
toluene-ar,ar-diamine
meta- toluenediamine
ar-Methylbenzenediamine

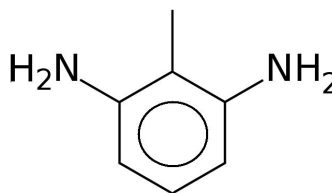
Other identity codes :

Molecular formula : C₇H₁₀N₂

Structural formula :



2,4-Toluenediamine



2,6-Toluenediamine

Molecular weight : 122 g/mol

TYPICAL COMPOSITION

Constituents *	: typical 80 (75-85) w% 2,4-Toluenediamine typical 20 (15-25) w% 2,6-Toluenediamine
Impurities *	: max 1.0 w% o-TDA max 1.0 w% 2,5-TDA max 1.5 w% High boiling impurities max 0.5 w% water max 0.1 w% Sulfated Ash max 0.3 w% Toluidines + other impurities

* Each component is determined by the corrected peak area normalization method obtained by means of a capillary gas chromatography (GC) with flame ionization detector (FID).

OTHER INFORMATION

CMR cat 1 or 2	: 2
R50/53	: N
Read across subst.	:

	EC No.	CAS No.
4-methyl-o-phenylenediamine	207-826-2	496-72-0
toluene-2,3-diamine	220-248-5	2687-25-4
Reaction mass of 2-methyl-m-phenylenediamine and 4-methyl-m-phenylenediamine		
4-methyl-m-phenylenediamine	202-453-1	95-80-7
3(or 4)-methylbenzene-1,2-diamine	248-145-0	26966-75-6